



RESIDENTIAL  
CONDOMINIUM

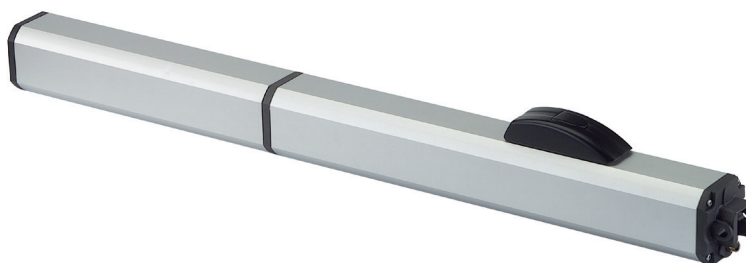
# Hydraulic Swing Gate Operator

maximum leaf width

12-20 ft

maximum leaf weight

900-2000 lb



- Wide and versatile range from residential to heavy industrial gates
- Hydraulic lock of the gate in open and/or closed positions
- Quiet operation
- Self lubricating for long life
- Key protected manual release
- Compliant with UL325 for Class I,II,III, and IV applications



## TECHNICAL SPECIFICATIONS

Model	400 CBC	400 CBAC	400 SB	400 SBS	400 CBACR	400 CBAC EG	400 SB EG
Input voltage	115 VAC (+10% -6%) or 230 VAC (+6% -10%)						
Power	220 W						
Current	2A (115V) - 1 A (230V)						
Motor	Asynchronous single phase						
Thrust capacitor	25uF (115V) - 8uF (230V)						
Operating ambient temperature	4°F - 131°F (-20 °C to +55 °C)						
Thermal protection on motor	248 °F (120 °C)						
Weight	19 lb (8.6 kg)			22 lb (10 kg)			
Protection class	IP 55						
Dimensions (L x D x H)	40.5 x 4.4 x 3.3 in (1,031x113x85 mm)					50.6 x 4.4 x 3.3 in (1,285x113x85 mm)	
Hydraulic Locking (1) = Closing (2) = Opening and Closing	(1)	(2)	None	None	(2)	(2)	None
Minimum Leaf Length	9.5 ft (2.9m)	9.5 ft (2.9m)	9.5 ft (2.9m)	12.5 ft (3.8m)	9.5 ft (2.9m)	11.5 ft (3.5m)	11.5 ft (3.5m)
Maximum Leaf Length	16 ft (4.9 m)	16 ft (4.9 m)	18 ft (5.5 m)	20 ft (6.1 m)	12 ft (3.6 m)	18 ft (5.5 m)	20 ft (6.1 m)
Maximum Leaf Weight	1300 lb (589 Kg)	1300 lb (589 Kg)	1600 lb (726 Kg)	2000 lb (907 Kg)	900 lb (408 Kg)	1500 lb (680 Kg)	1800 lb (816 Kg)
Thrust force	1390 lbf (620 daN)	1390 lbf (620 daN)	1390 lbf (620 daN)	1740 lbf (775 daN)	1045 lbf (465 daN)	1045 lbf (465 daN)	1045 lbf (465 daN)
Pump flow rate	1 l/m	1 l/m	1 l/m	0.75 l/m	1.5 l/m	1.5 l/m	1.5 l/m
90° opening time	approx. 18 sec	approx. 18 sec	approx. 18 sec	approx. 24 sec	approx. 12 sec	approx. 18 sec	approx. 18 sec
Effective rod stroke	10.25 in (260mm)	10.25 in (260mm)	10.25 in (260mm)	10.25 in (260mm)	10.25 in (260mm)	15 in (380mm)	15 in (380mm)
Use Frequency (cycles per hour)	70	70	70	60	80	50	50

## NOTE

- Mounting dimensions, wind factor and gate design will affect performance specification
- Use frequency is measured at an ambient temperature of 72 °F (20 °C) . Temperature variation will affect it
- An electric or magnetic lock is recommended for any gate longer than 12 ft (3.6 m)
- Positive gate stops, which limit gate travel, are required in the opened and closed positions

## 400

Model	Shipping Wt (approx)	Voltage	Oil Type	Part No.
400 CBAC Standard Basic Single Kit	54 lb (24.5 Kg)	115V	Regular	10420112.5
			Arctic	1042011277.5
		230V	Regular	1042011.5
			Arctic	1042011677.5
400 CBACR Rapid Basic Single Kit	54 lb (24.5 Kg)	115V	Regular	10420712.5
			Arctic	1042071277.5
		230V	Regular	1042071.5
			Arctic	104207177.5
400 CBAC EG (long) Basic Single Kit	54 lb (24.5 Kg)	115V	Regular	10420212.5
			Arctic	1042021277.5
		230V	Regular	1042021.5
			Arctic	104202177.5

The package 400 - Basic Single Kit 115V contains:

Qty	Description	Part Number
1	Operator 400 CBAC	Various
1	Prewired fiberglass enclosure 115V 14x16 in	3300
1	455D control panel 115V	790919
1	Receiver 433 RC Plug In	787741
2	4-channel transmitter XT4 433 RC	787453
1	Pair of XP 30 photobeam photocells	785105
2	XP 30 adapters for conduit connection	401064

The package 400 - Basic Single Kit 230V contains:

Qty	Description	Part Number
1	Operator 400 CBAC	Various
1	Prewired fiberglass enclosure 230V 14x16 in	3303
1	455D control panel 230V	790926
1	Receiver 433 RC Plug In	787741
2	4-channel transmitter XT4 433 RC	787453
1	Pair of XP 30 photobeam photocells	785105
2	XP 30 adapters for conduit connection	401064

To make the above kit a master/slave (bi-parting) system add one of the following:

Model	Shipping Wt	Voltage	Oil Type	Part No.
400 CBAC Standard Operator only	29 lb (13.2 Kg)	115V	Regular	104201125
			Arctic	1042011577
		230V	Regular	1042011
			Arctic	1042011677
400 CBACR Rapid Operator only	29 lb (13.2 Kg)	115V	Regular	10420712
			Arctic	1042071277
		230V	Regular	1042071
			Arctic	104207177
400 CBAC EG (long) Operator only	29 lb (13.2 Kg)	115V	Regular	104202125
			Arctic	1042021277
		230V	Regular	1042021
			Arctic	104202177

## 455D 115VAC / 230VAC Control Board

- Operates a single leaf or bi-parting gate
- Programmable opening and closing slow down
- 8 different function logics
- Built in closing timer
- Fail safe function for photocells
- Opening and closing delays selectable for overlapping gates
- Electrical thrust force adjustable

### TECHNICAL SPECIFICATIONS

Input voltage	115 VAC (+10% -6%) or 230 VAC (+6% -10%)
Input power	10 W
Motor max. load	800 W
Accessory max. load	500 mA
Electric lock max load	15 VA
Operating Temperature	-4°F - 131°F (-20°C - +55°C)
Dimensions overall (L x D x H)	17.5 x 15.5 x 6.2" (445x393x157mm)
Weight (without batteries)	15.5 Lbs (7 kg)
Protection class	NEMA type 3, 3R, 4, 4X, 12 and 13
Number of operating logics	8
Protection Fuses	2