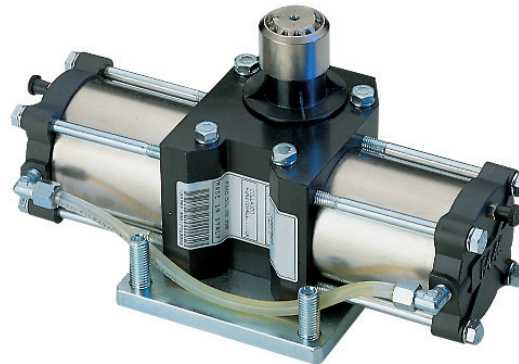


maximum leaf width

13 ft

maximum leaf weight

1760 lb



- Invisible, quiet operator with separate drive unit and pump motor.
- The ideal solution for artistic gates
- Wide and versatile range from residential to commercial
- Hydraulic lock of the gate in open and closed positions
- Quite operation
- Self lubricating for long life
- UL 325 Compliant

TECHNICAL SPECIFICATIONS OF 750 PUMP MOTOR ASSEMBLY

Input voltage	115 VAC (+10% -6%) or 230 VAC (+6% -10%)
Power	220 W
Current	2A (120V) - 1 A (230V)
Motor	Asynchronous single phase
Pump flow rate	0.75 l/min
Operating ambient temperature	4°F - 131°F (-20 °C to +55 °C)
Protection class	IP 55
Thermal protection on motor winding	248 °F (120 °C)
Use Frequency (cycles per hour)	45
Weight	16.5 lb (7.5 kg)
Dimensions (L x D x H) in mm	9.6 x 13.9 x 5.5 in (245x353x141mm)

TECHNICAL SPECIFICATIONS OF 750 DRIVE UNIT

	100° opening	180° opening
Maximum rotation angle	118°	200°
Angle speed		8.5°/s
Protection class		IP 67
Effective torque		400 lbf.ft (543 Nm)
Minimum leaf length		8 ft (2.4m)
Maximum leaf length	13 ft (4 m) with external lock - 8 ft (2.4m) without external lock	
Maximum leaf weight	1760 lb (800 Kg)	

NOTE

- Mounting dimensions, wind factor and gate design will affect performance specification
- Use frequency is measured at an ambient temperature of 72 °F (20 °C) . Temperature variation will affect it
- An electric or magnetic lock is recommended for any gate longer than 8 ft (2.4 m)
- Positive gate stops, which limit gate travel, are required in the opened and closed positions

750

Model	Shipping Wt (approx)	Voltage	Part No.
750 CBAC Pump Motor Assembly with enclosure	15 lb (6.8 Kg)	115 V	107725.5
		230 V	1077251.5
750 CBAC Pump Motor Assembly only	12 lb (5.4 Kg)	115 V	107725
		230 V	1077251
750 100° Drive Unit	26 lb (11.8 Kg)		108757
750 180° Drive Unit	26 lb (11.8 Kg)		108758

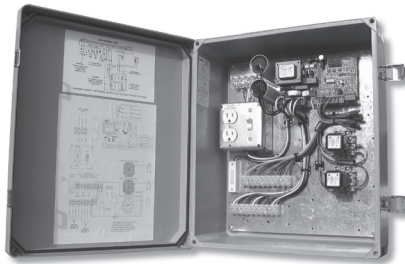
The 750 Drive Unit includes: the drive unit, installation accessories, metal enclosure with stainless steel cover, extra oil.

To assemble a 115V system for a single leaf gate you need:

Qty	Description	Part Number
1	750 CBAC Pump Motor Assembly with enclosure	107725.5
1	750 100° Drive Unit	108757
1	455D with 14 x 16 in. fiberglass enclosure	455D115F.5
1	Foundation plate	737607
1	Flex hose connector kit	390421.5
1	Flexible hydraulic hose	390422

To assemble a 115V system for a dual leaf gate you need:

Qty	Description	Part Number
2	750 CBAC Pump Motor Assembly with enclosure	107725.5
2	750 100° Drive Unit	108757
1	455D with 14 x 16 in. fiberglass enclosure	455D115F.5
2	Foundation plate	737607
2	Flex hose connector kit	390421.5
2	Flexible hydraulic hose	390422



- Operates a single leaf or bi-parting gate
- Programmable opening and closing slow down
- 8 different function logics
- Built in closing timer
- Fail safe function for photocells
- Opening and closing delays selectable for overlapping gates
- Electrical thrust force adjustable

455D 115VAC / 230VAC Control Board

TECHNICAL SPECIFICATIONS

Input voltage	115 VAC (+10% -6%) or 230 VAC (+6% -10%)
Input power	10 W
Motor max. load	800 W
Accessory max. load	500 mA
Electric lock max load	15 VA
Operating Temperature	-4°F - 131°F (-20°C - +55°C)
Dimensions overall (L x D x H)	17.5 x 15.5 x 6.2" (445x393x157mm)
Weight (without batteries)	15.5 Lbs (7 kg)
Protection class	NEMA type 3, 3R, 4, 4X, 12 and 13
Number of operating logics	8
Protection Fuses	2